

ZEITQUARTIER EXPOSÉ

Top apartment with terrace and garden surrounded by greenery



This tastefully furnished apartment is located in the idyllic district of Essen-Kettwig. The hillside location offers numerous advantages: a private entrance at ground level, a private driveway with parking space right outside the front door and a magnificent view over extensive fields and meadows. Here you will experience a quiet, natural living atmosphere surrounded by greenery. The highlight of the apartment is the spacious terrace with adjoining garden. Comfortable garden furniture and a large parasol invite you to enjoy nature and relax. The large open-plan living area flows into a fully equipped eat-in kitchen. The dining table comfortably seats up to six people and can also be used as a workspace. In the adjoining living area, a comfortable sofa, a TV bench with flat-screen TV and two recliners create a cozy atmosphere. A spacious storage room and a large closet provide plenty of storage space. Two high-quality beds (each 1.00 x 2.00 m) await you in the bedroom, which can be flexibly arranged as double or single beds. The bathroom has a shower and a bathtub – a washing machine and plenty of hand and bath towels provide additional comfort. This apartment is the ideal accommodation for one or two people who are looking for well-equipped accommodation in a quiet, natural location for a short or long stay.

Location and area

The apartment is located in the beautiful district of Essen Kettwig in a quiet residential area. Despite the natural surroundings, all important facilities for daily needs are within easy reach. The charming historic center of Kettwig with its half-timbered houses, cafés, restaurants and small stores is just a few minutes away. At the same time, the good transport links ensure quick access to Essen, Düsseldorf and other cities in the Ruhr region. The A52 and A3 freeways and the Kettwiger Stausee train station are just a short drive away. Essen main station can be reached in 20 minutes by S-Bahn or Düsseldorf main station in 30 minutes. A plus point is the own parking space directly at the house.

General

- Bedroom
- Garden access
- Ground floor

Enquiry

Telefon: +49 (0) 201 1789688

Telefax: +49 (0) 201 1789687

info@zeitquartier.de

www.zeitquartier.de

Property number

175.1

Location

45219 Essen

Prize

from 1,000 € per Month

Number of guests

2

Bedroom

1

Size

75 qm

Number of rooms

2

Booking period

from 1 month

ZEITQUARTIER EXPOSÉ

- Internet
- Living room with open kitchen
- Non-smoking
- Parking space for car
- Pets on request
- Terrace
- TV

Kitchen unit

- Ceramic stove with 4 hobs
- Complete kitchenware
- Dining table
- Dishwasher
- Filter coffee machine
- Freezer
- Microwave
- Oven
- Refrigerator
- Toaster
- Water heater

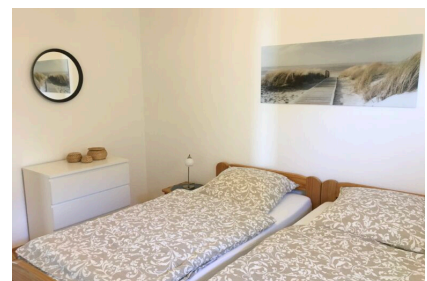
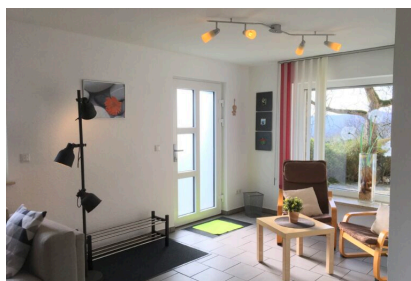
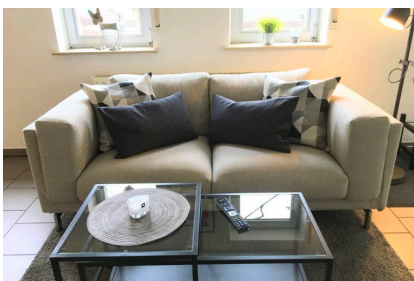
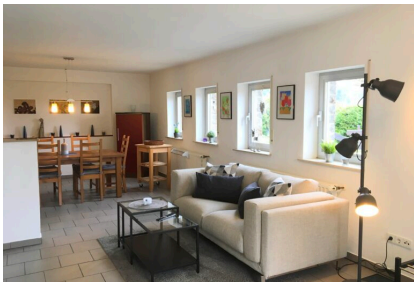
Living and sleeping

- Bathroom with bathtub and shower
- Bedroom with two single beds
- Living room with open kitchen, sofa and TV

Service

- Bed linen and towels
- Final cleaning
- Washing machine in the apartment

More images



ZEITQUARTIER EXPOSÉ

